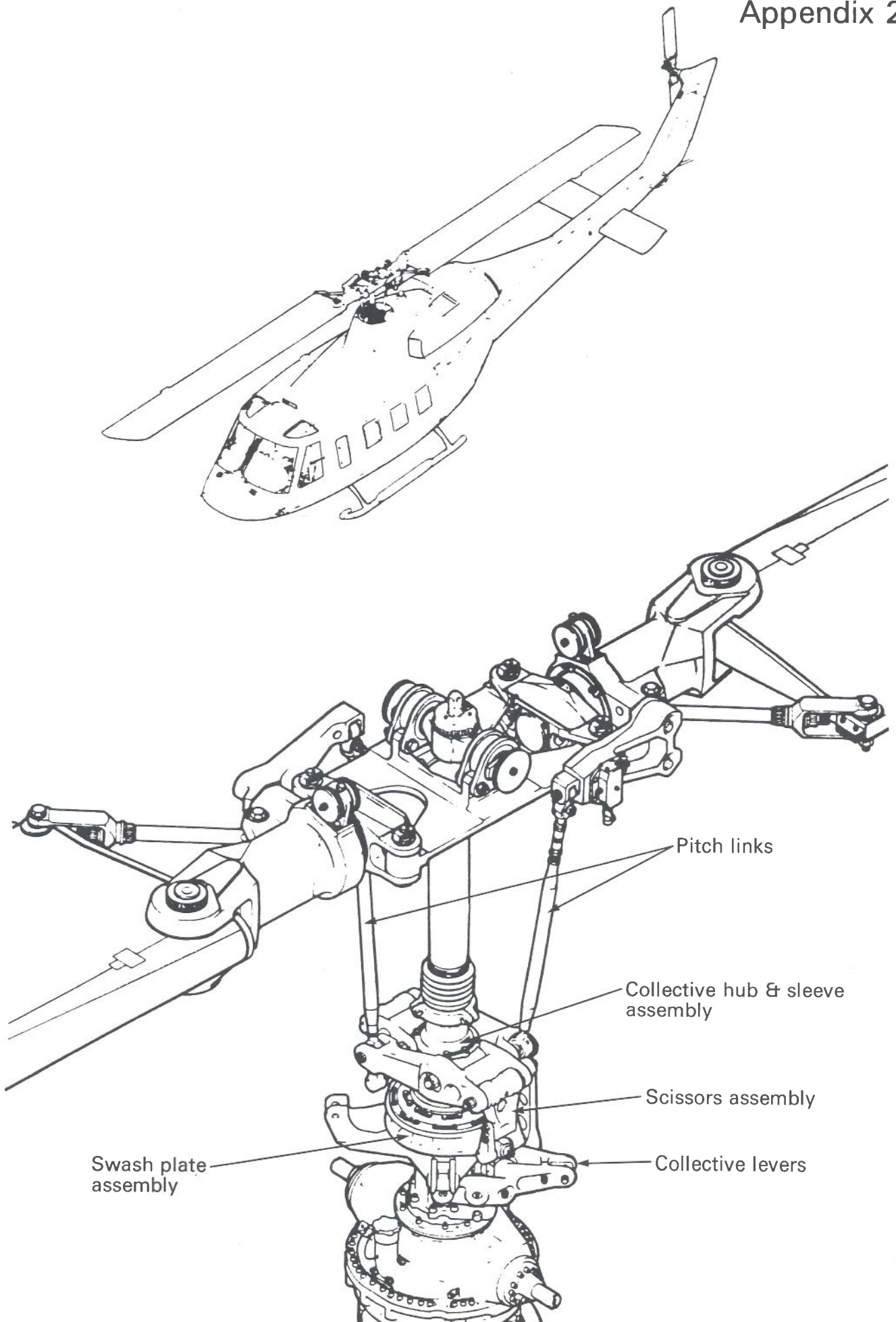
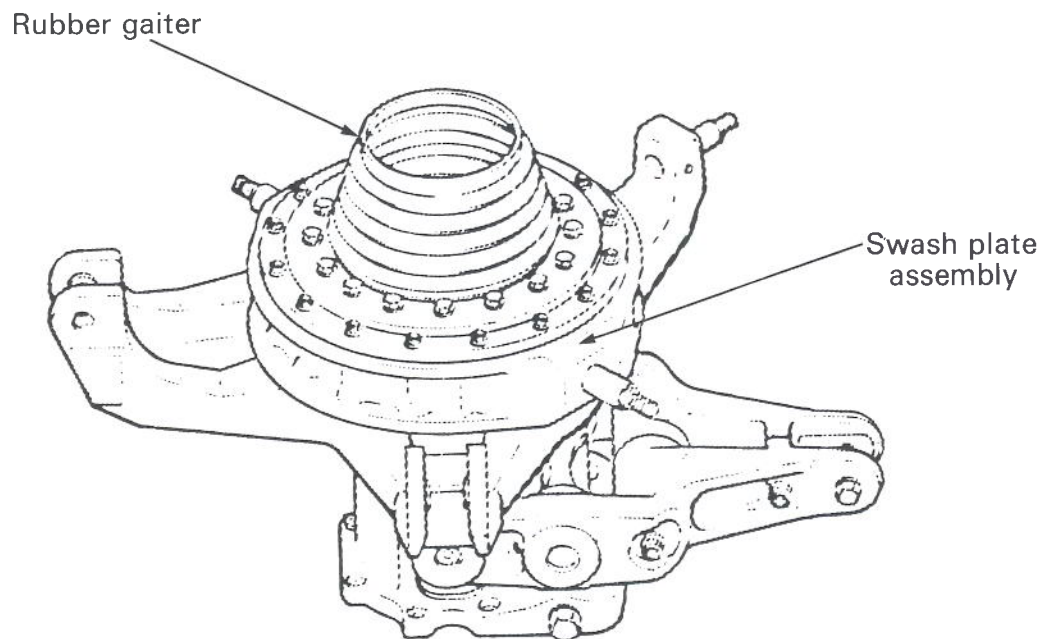
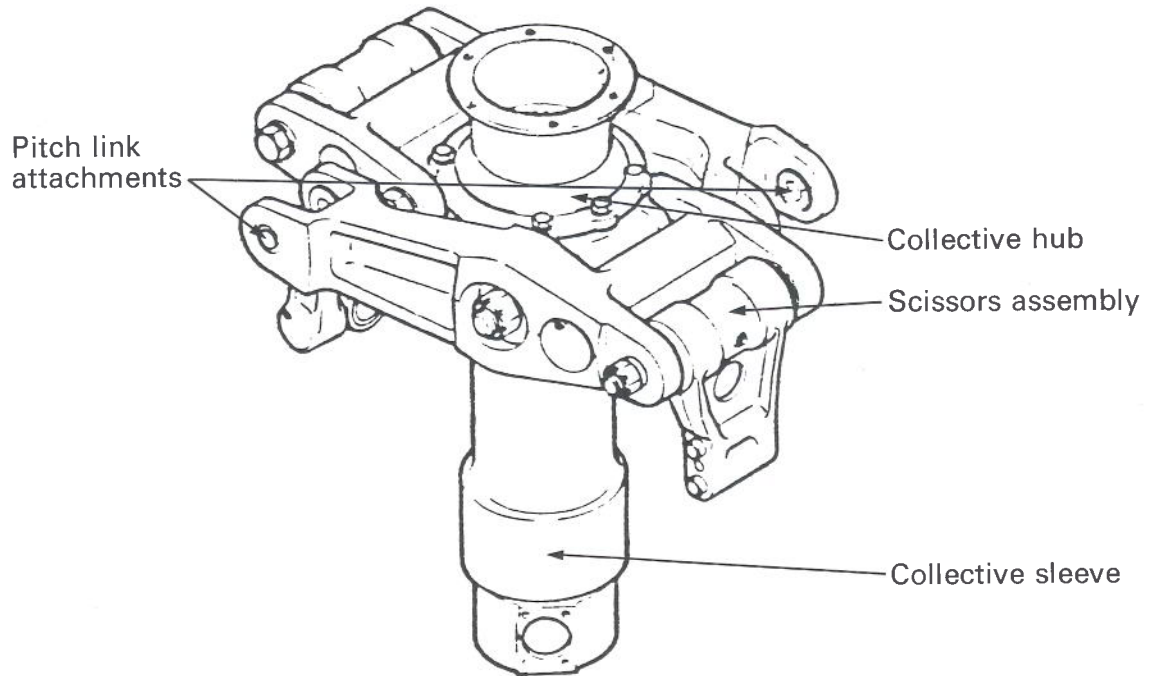


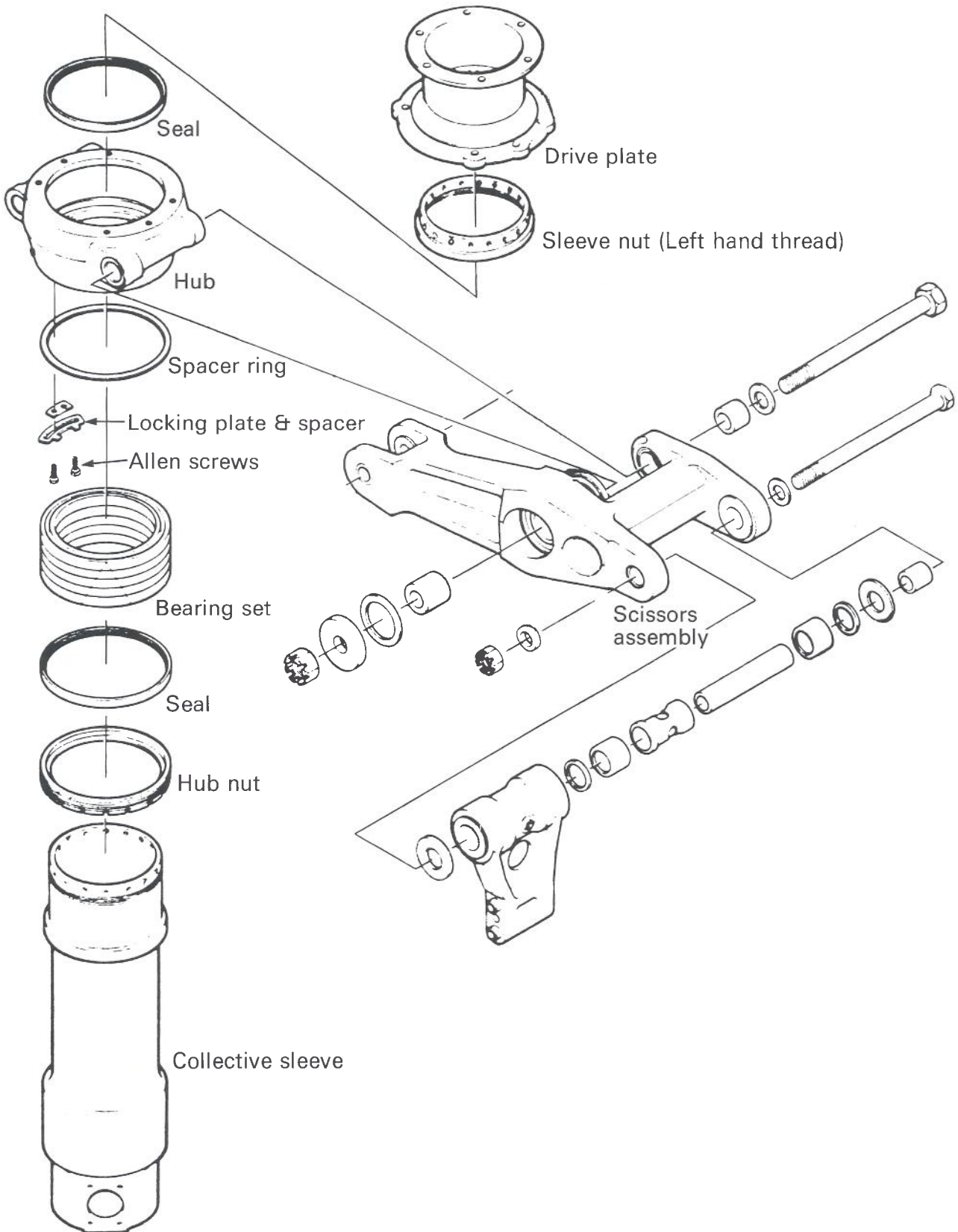
Map of route followed by G-BKFN



**BELL 214ST COLLECTIVE CONTROLS AT THE ROTOR**

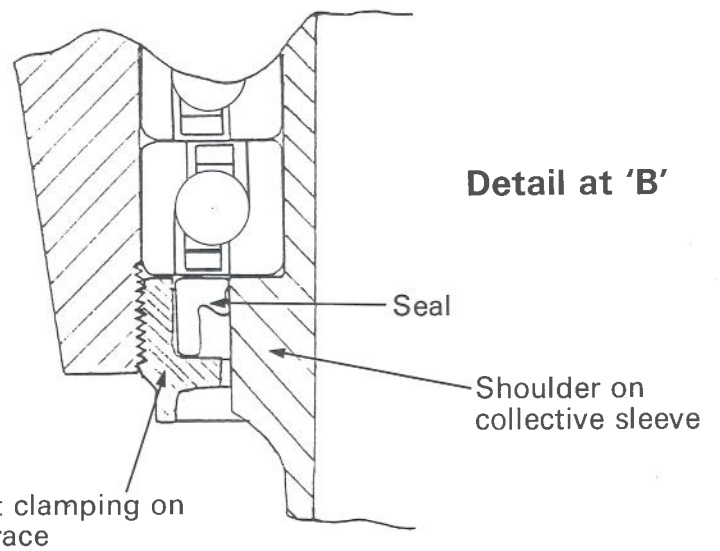
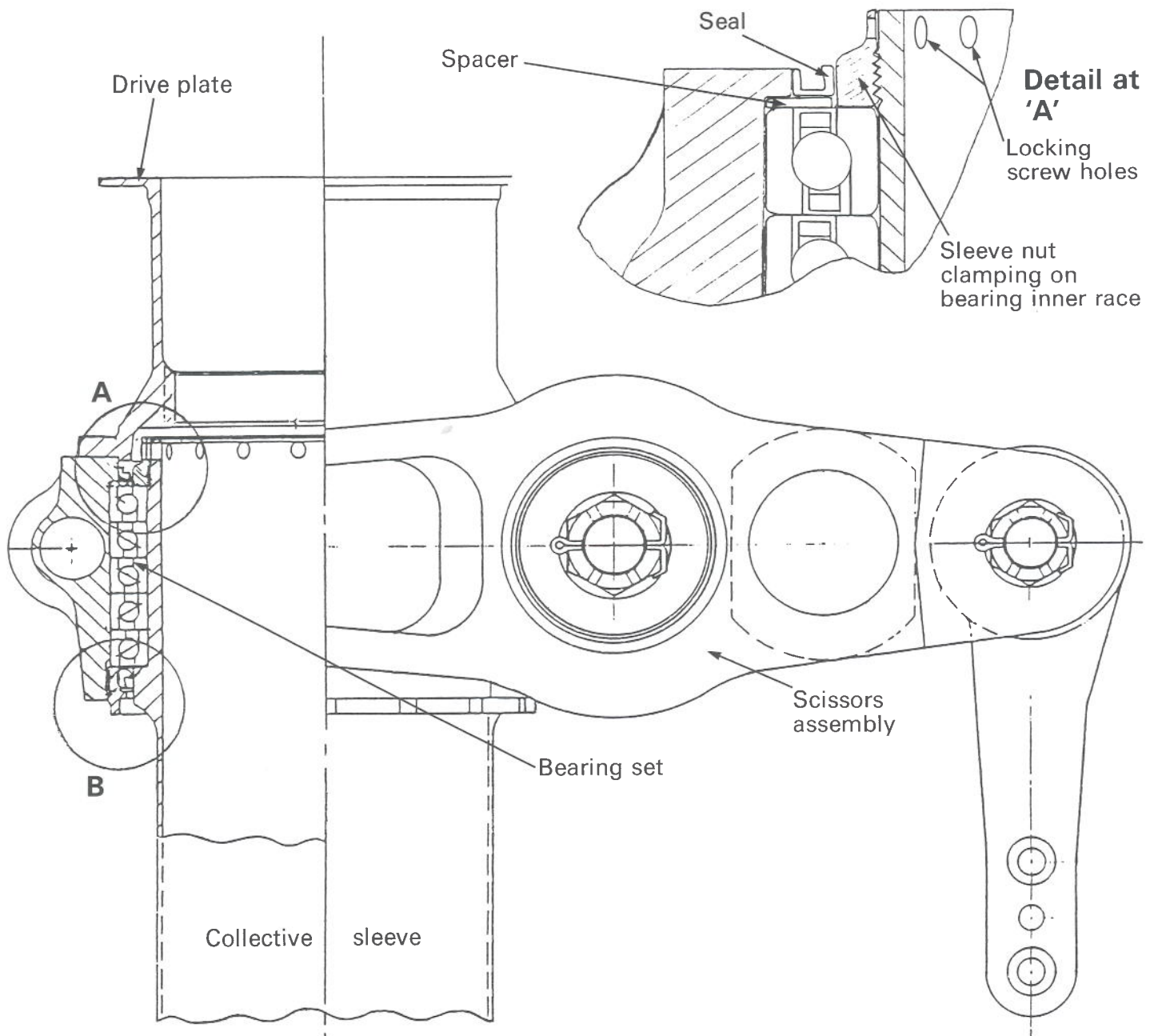


## COLLECTIVE SLEEVE AND SCISSORS ASSEMBLIES

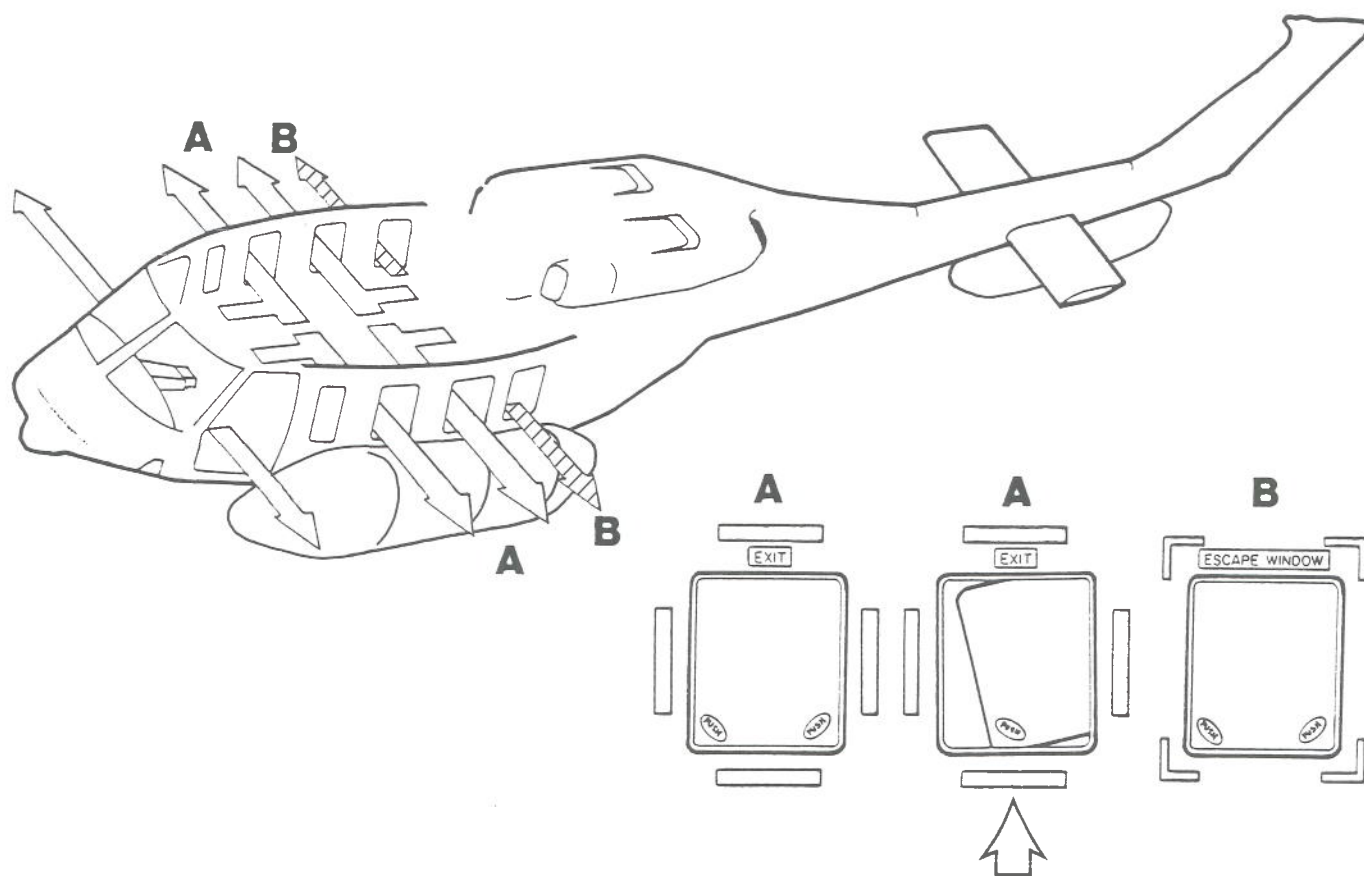


**COLLECTIVE SLEEVE & HUB DISASSEMBLED**

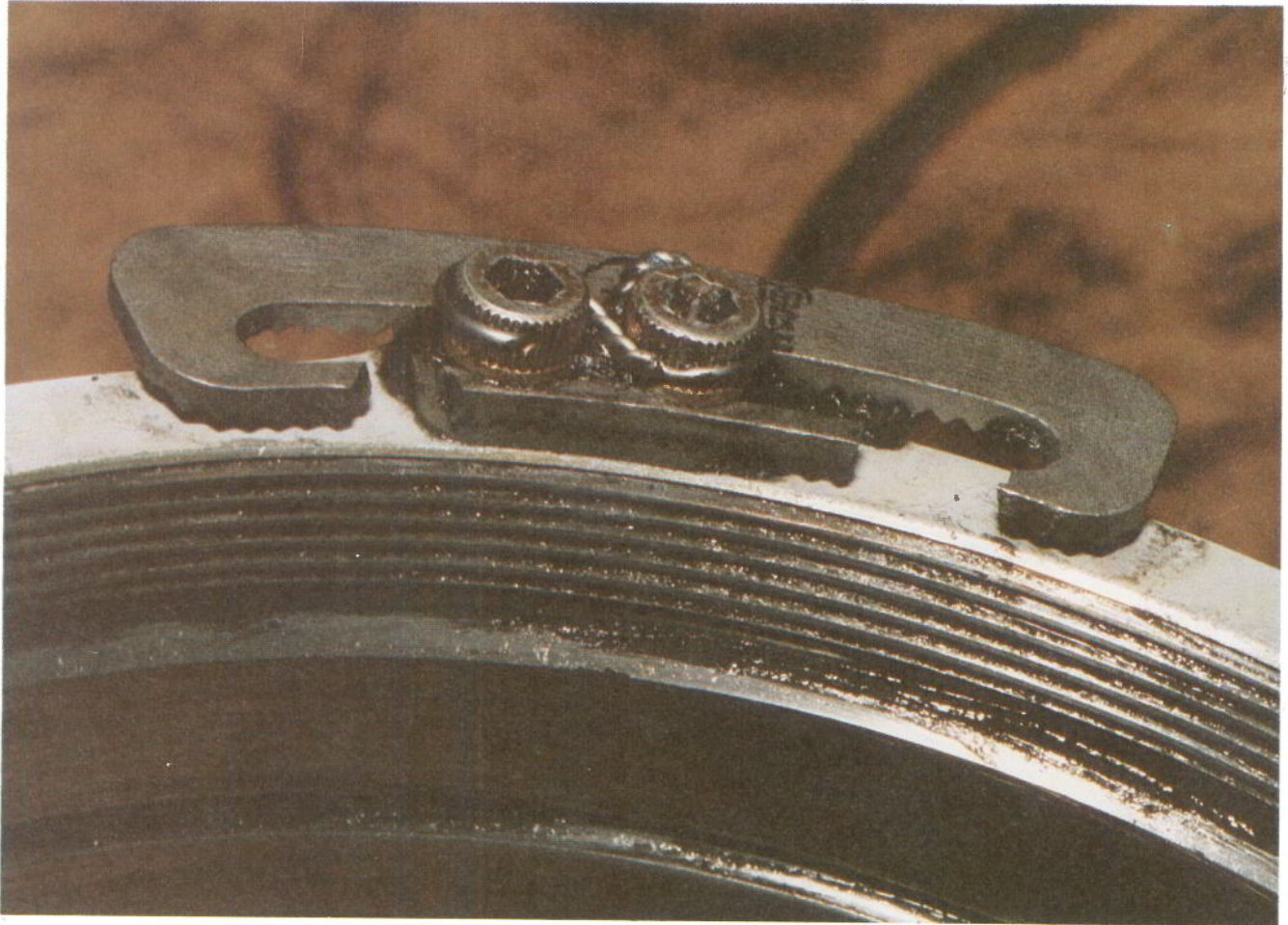




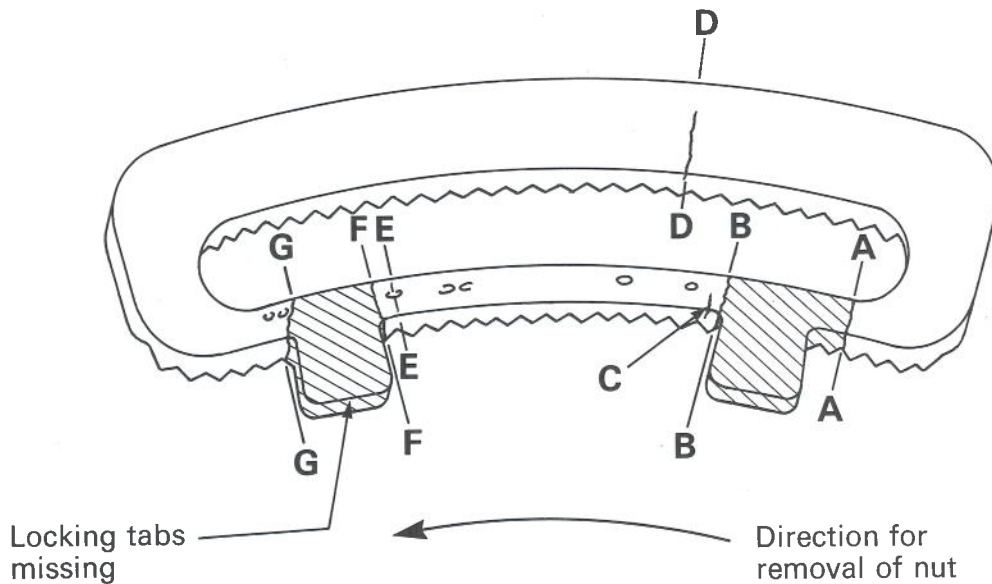
### HUB AND BEARING DETAILS



**BELL 214ST EMERGENCY EXITS**



**VIEW OF LOCKING PLATE AS FOUND**

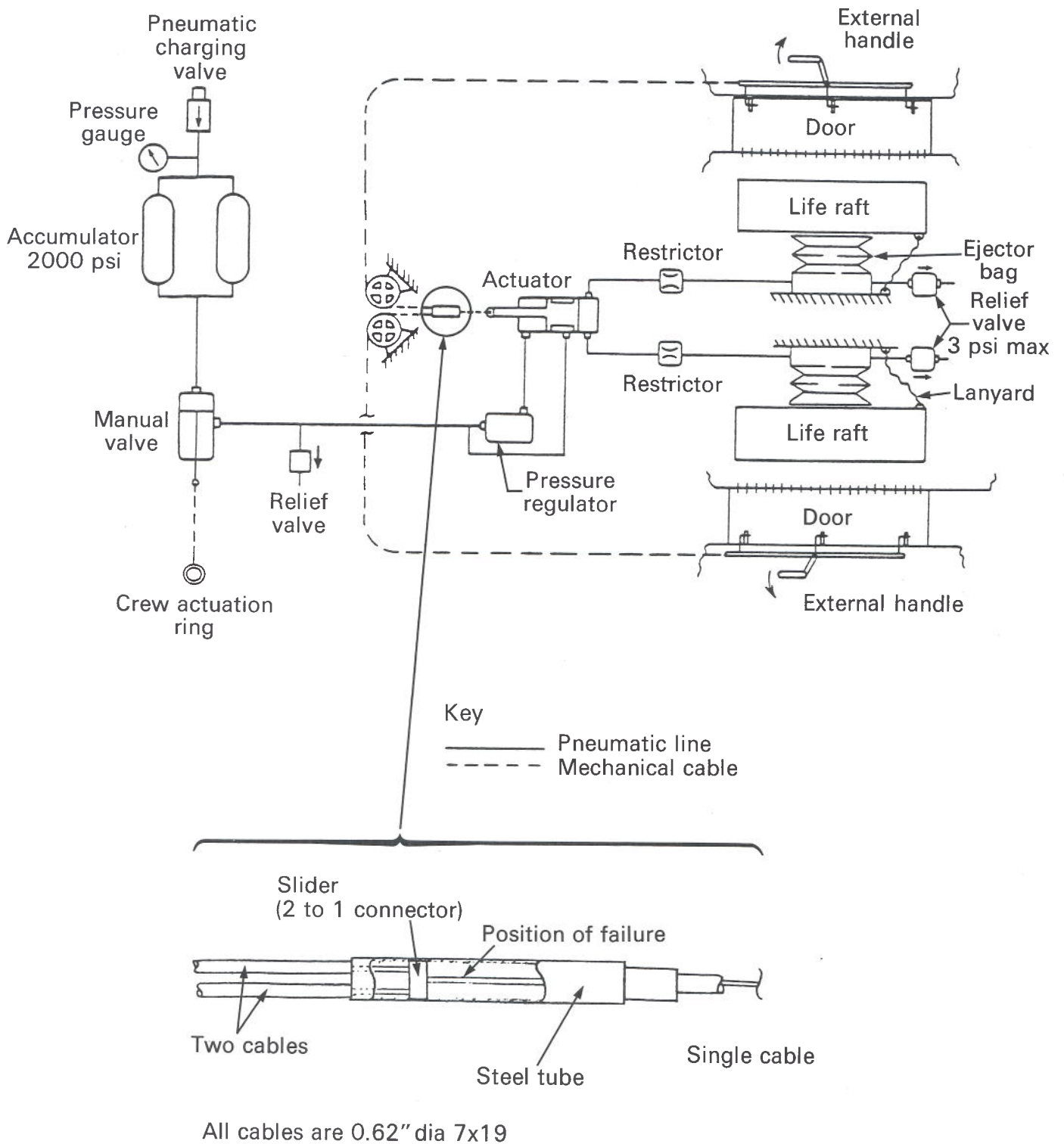


Fracture/Crack Location

Fracture	Serration No.	The upper locking plate engaged in serrations 14 through 24. The retention screws centered on serrations 16 and 22.
A - A	5	
B - B	10	
F - F	24	
G - G	27	
Crack		
C	11	
D - D	14	
E - E	24	

**VIEW OF BOTTOM SIDE OF LOWER LOCKING PLATE**  
(i.e. looking upward as installed on aircraft)





**SCHEMATIC OF LIFERAFT DEPLOYMENT SYSTEM**



**VIEW OF REMAINS OF FORWARD FAIRING (FLOATS REMOVED)  
NOTE TABS ON ATTACHMENT BRACKET**