

Figure 1 Rolls-Royce RB211 Standard Thrust Reverser

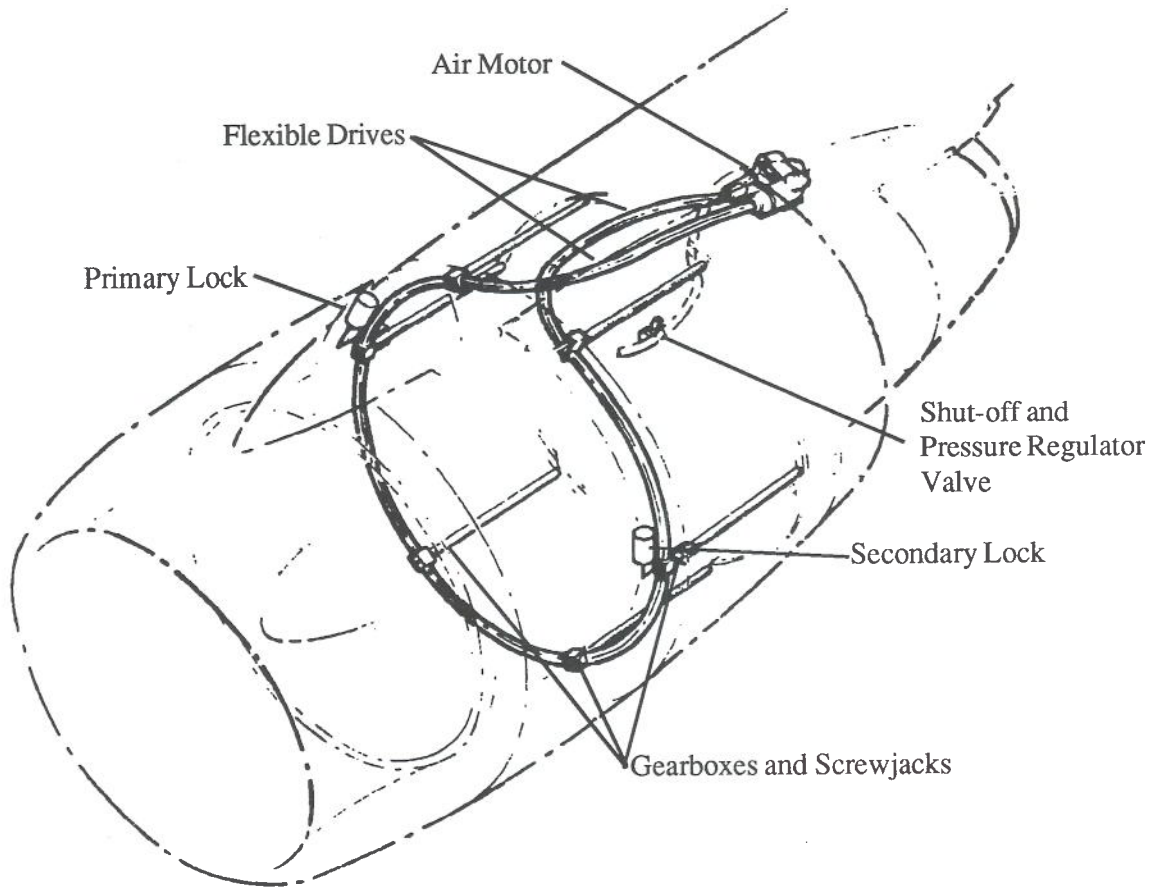


Figure 2 Translating Cowl Drive Layout

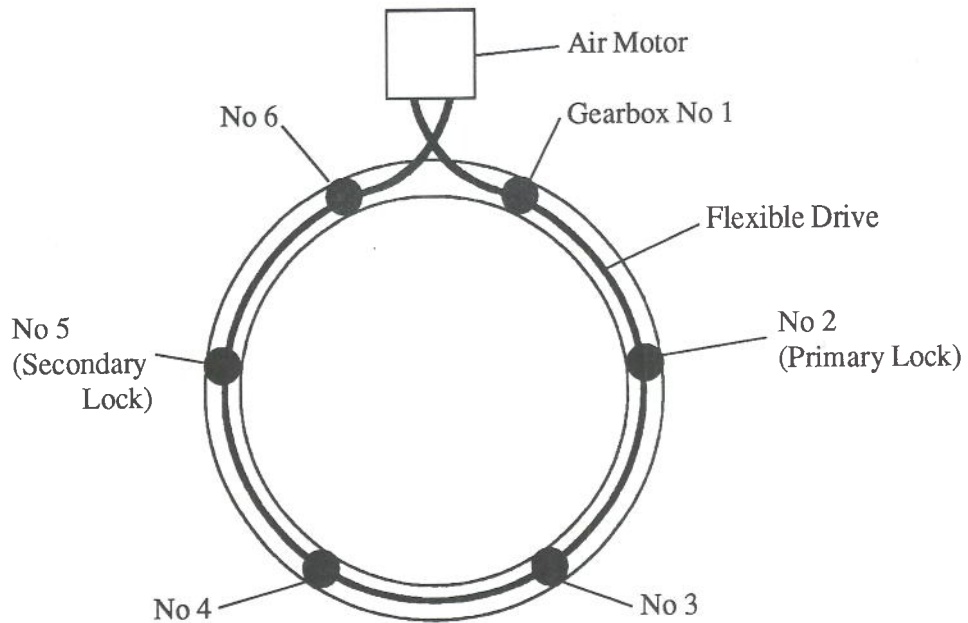


Figure 3 Translating Cowl Gearbox and Screwjack Positions Viewed from Rear

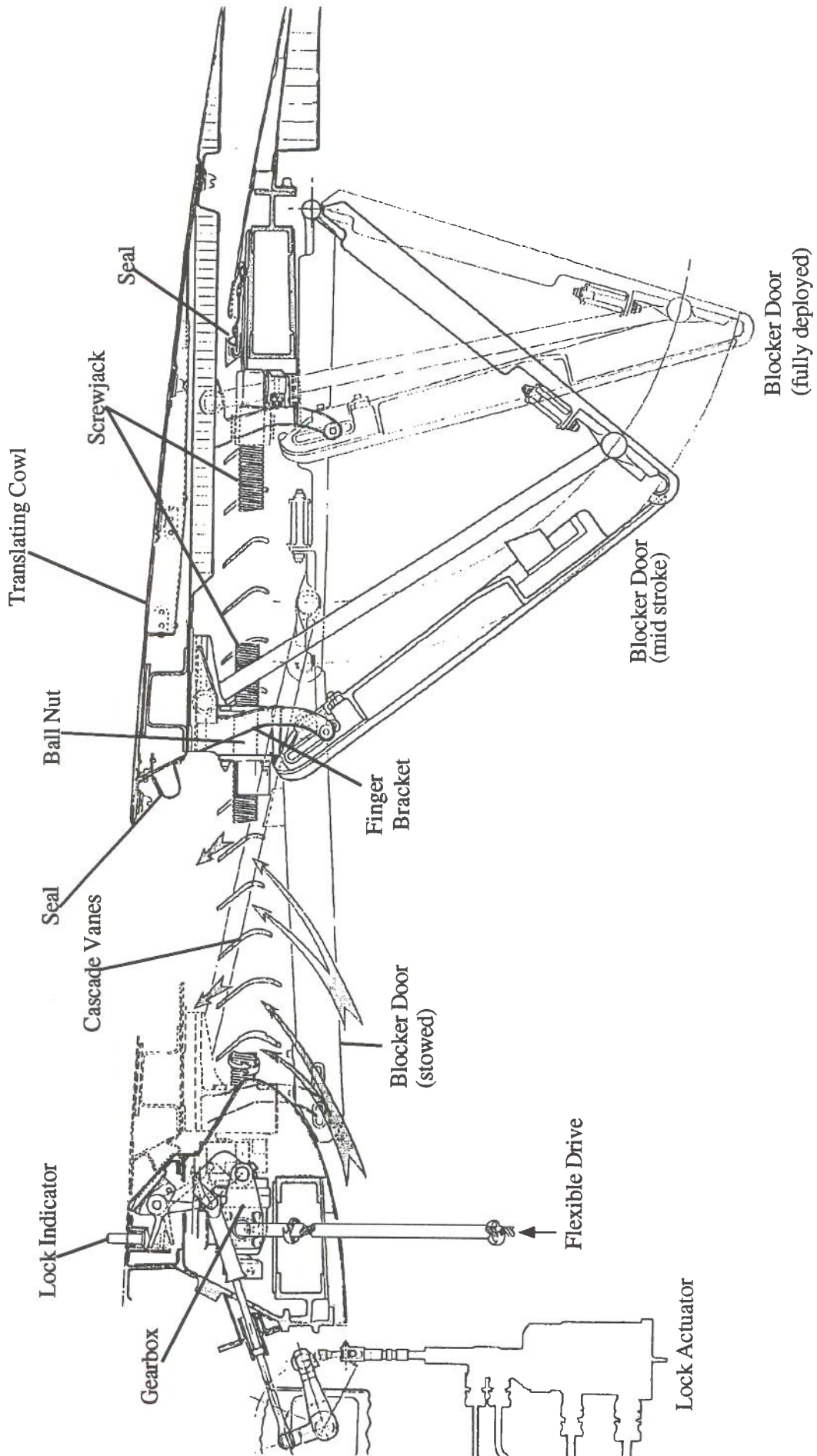
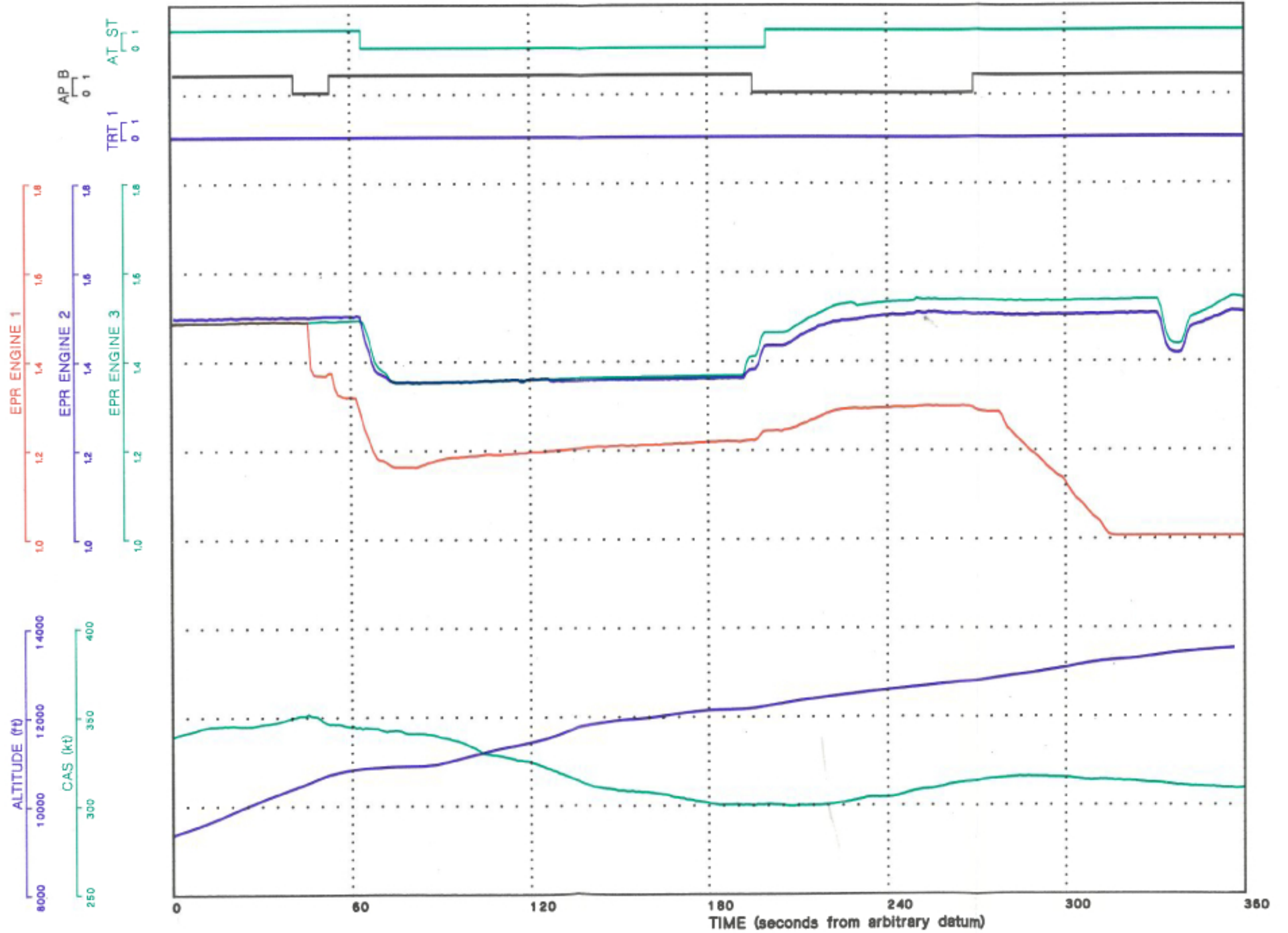
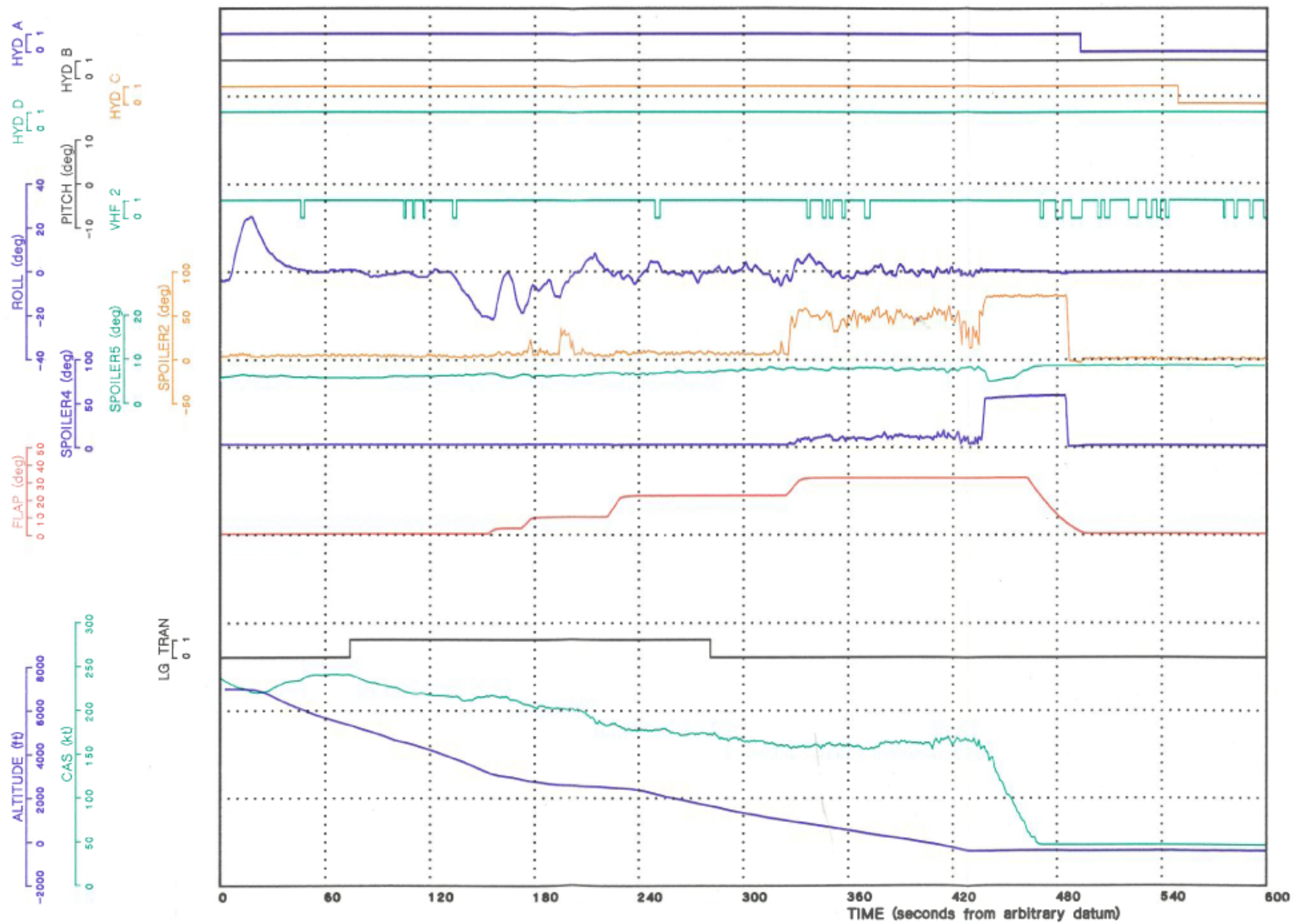


Figure 4 Cowl and Blocker Door Operating Mechanism

SELECTED DFDR PARAMETERS - ENGINE SHUTDOWN



SELECTED DFDR PARAMETERS - APPROACH AND LANDING

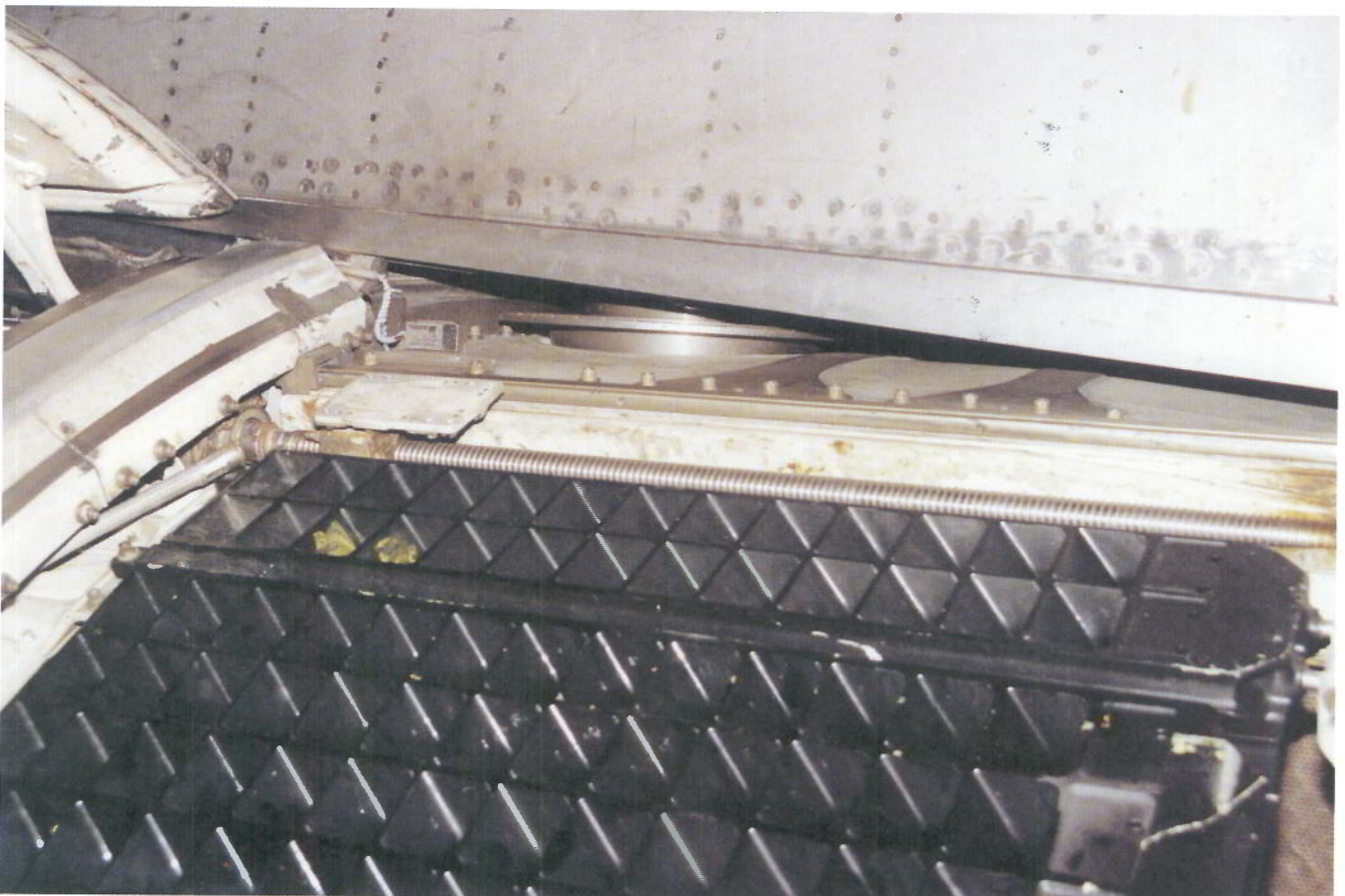




Photograph of detached cowl fragments



Photograph 1: Engine - General view



Photograph 2: Engine - Detail view