



Fig 1a AS 332L Super Puma (right side)

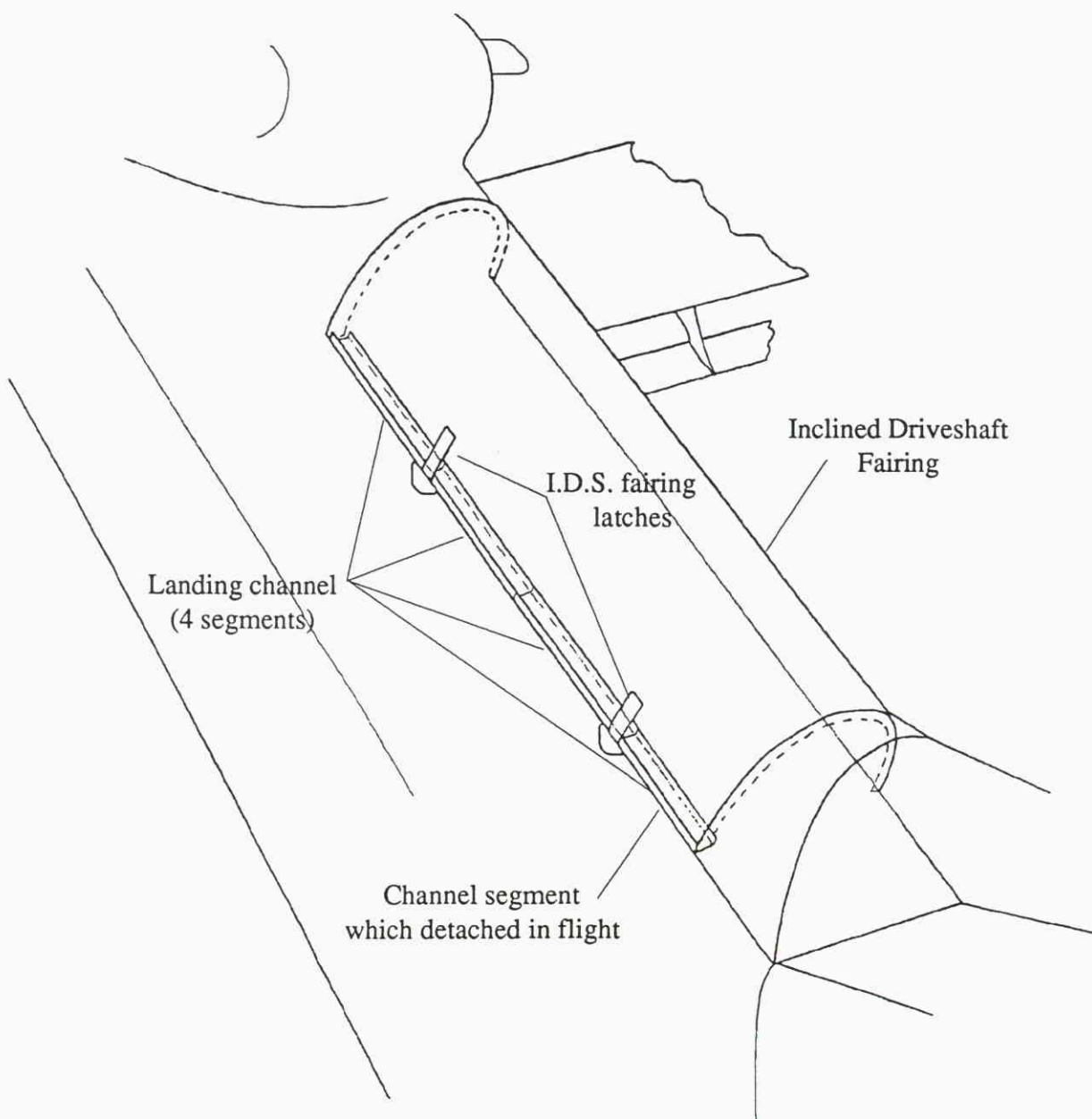


Fig 1b Detail of Inclined Driveshaft Fairing latching edge

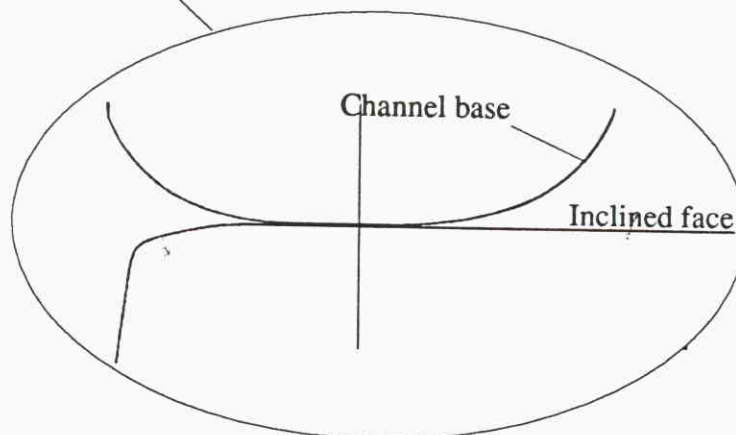
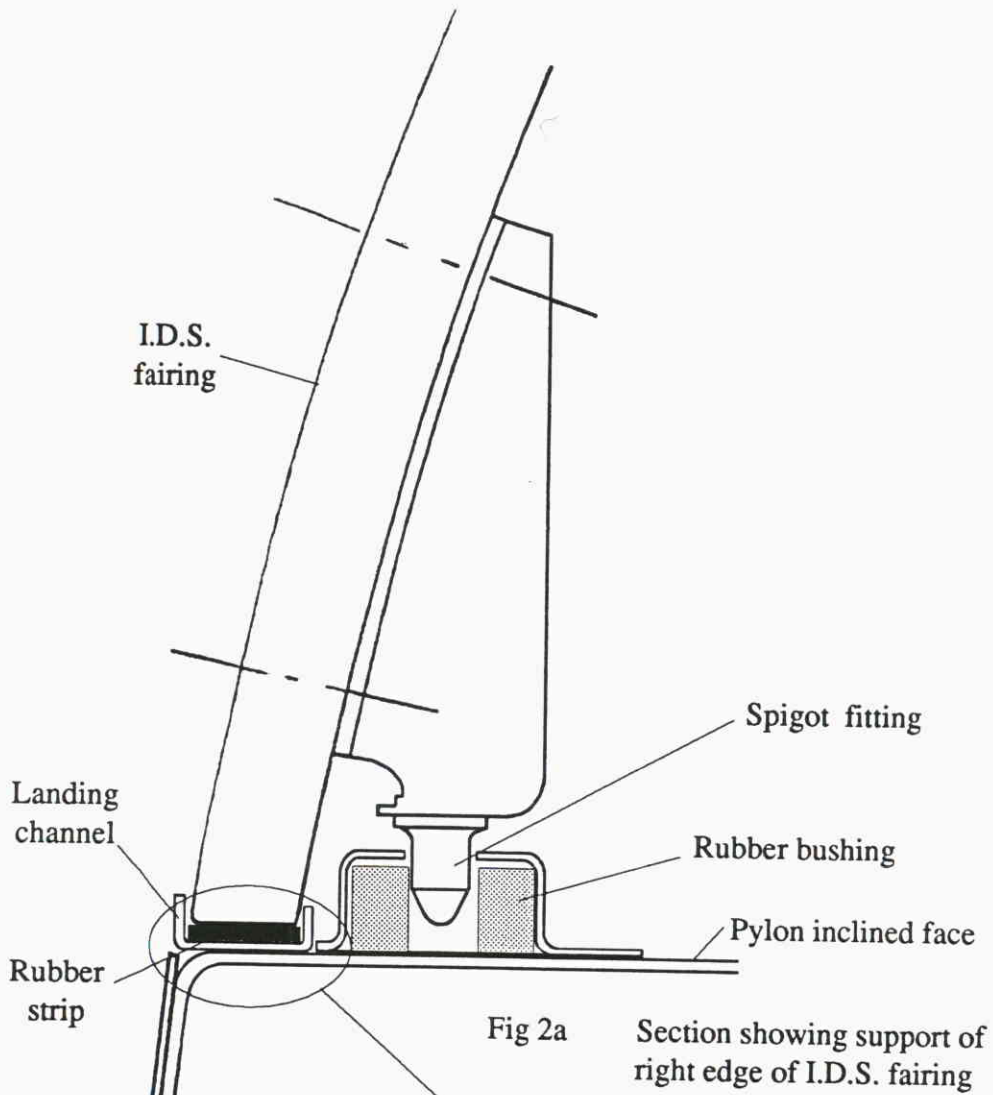
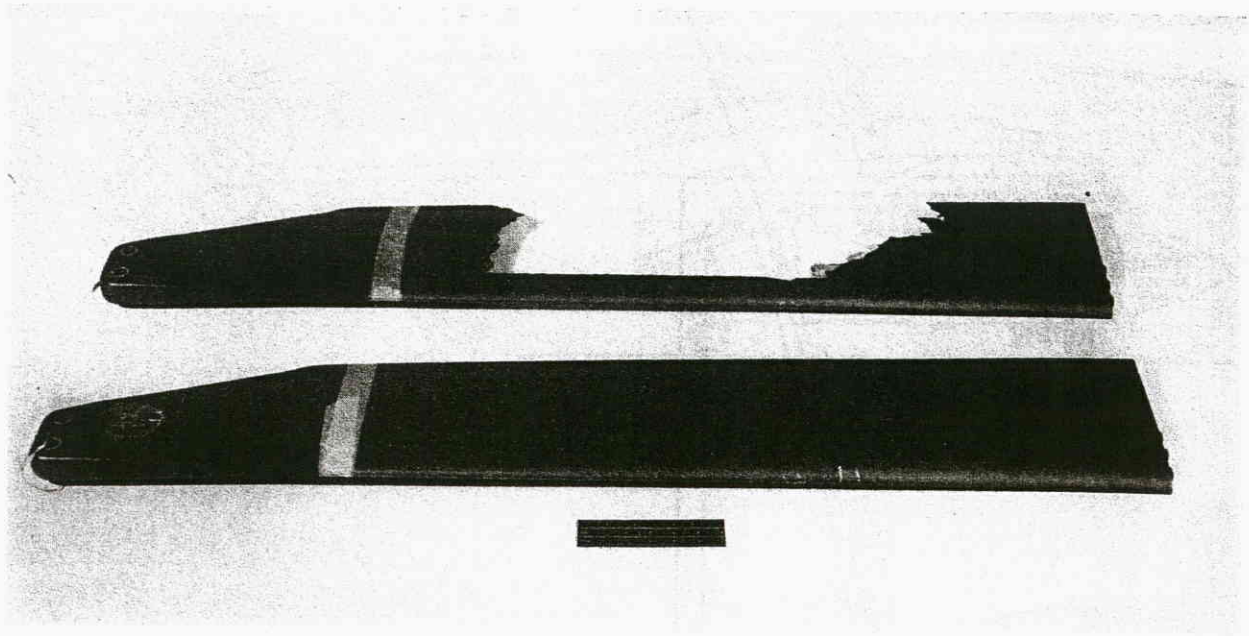
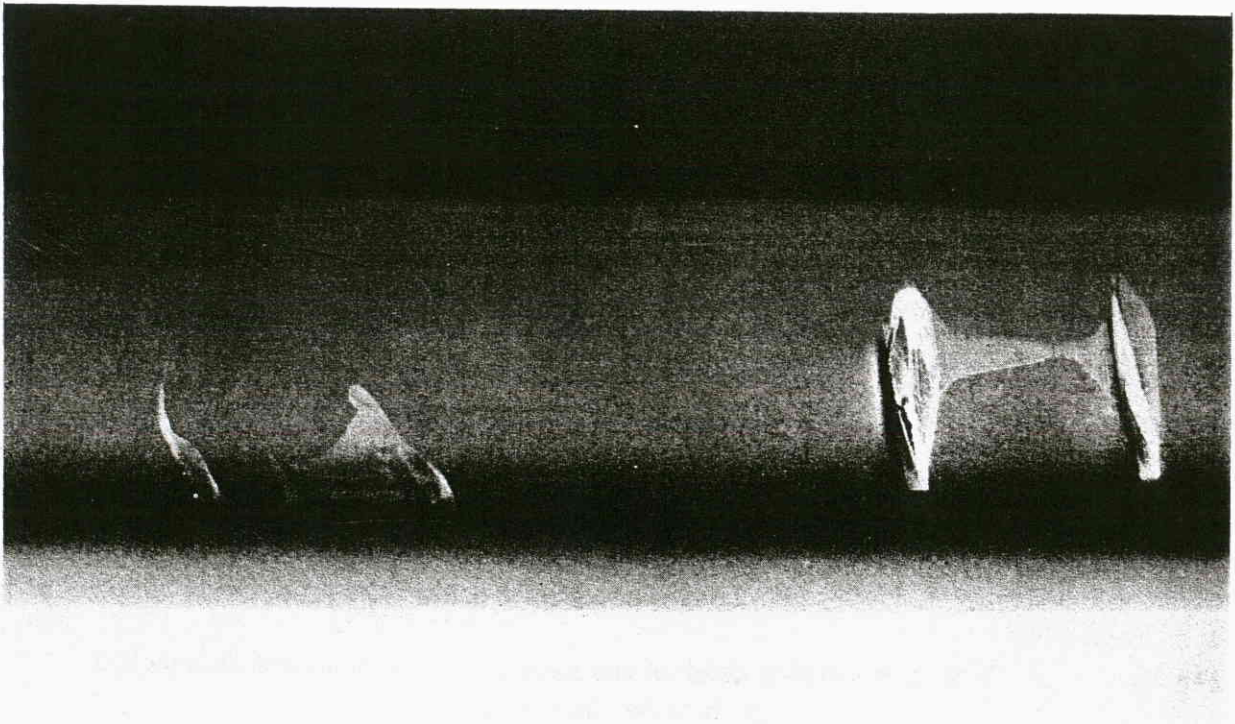


Fig 2b Section showing detail of abutment of the manufactured channel base to the pylon inclined face

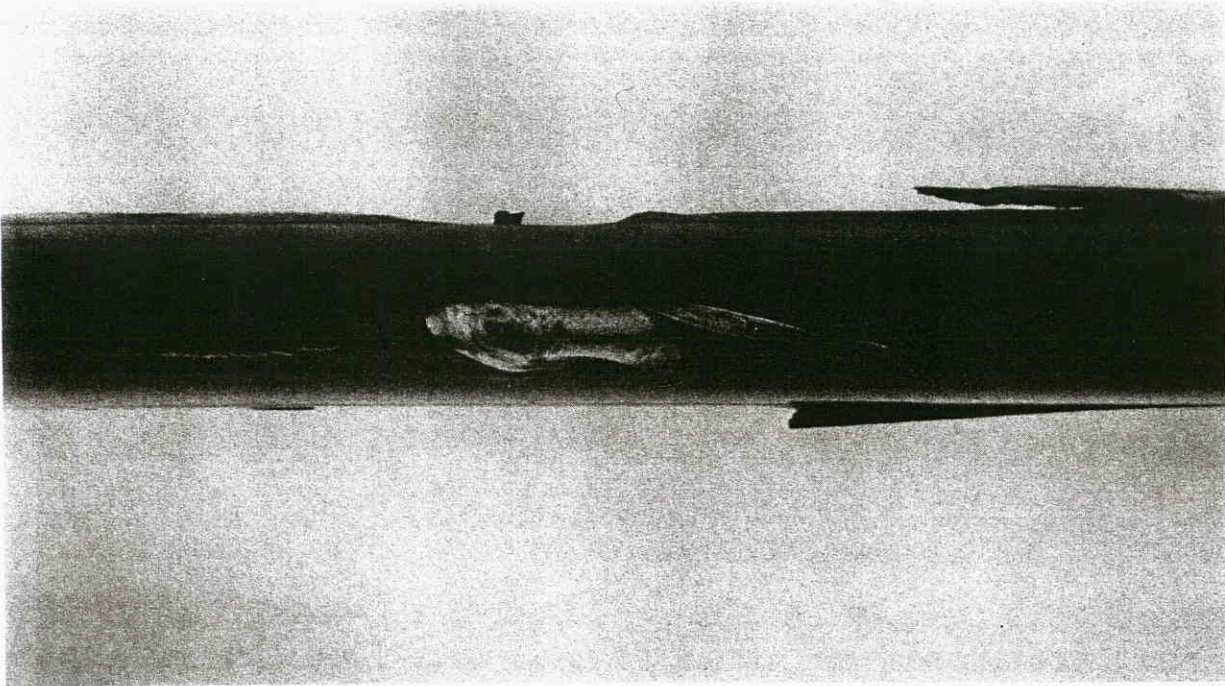


3 a) 'White' (front) and 'Black' tail rotor blades

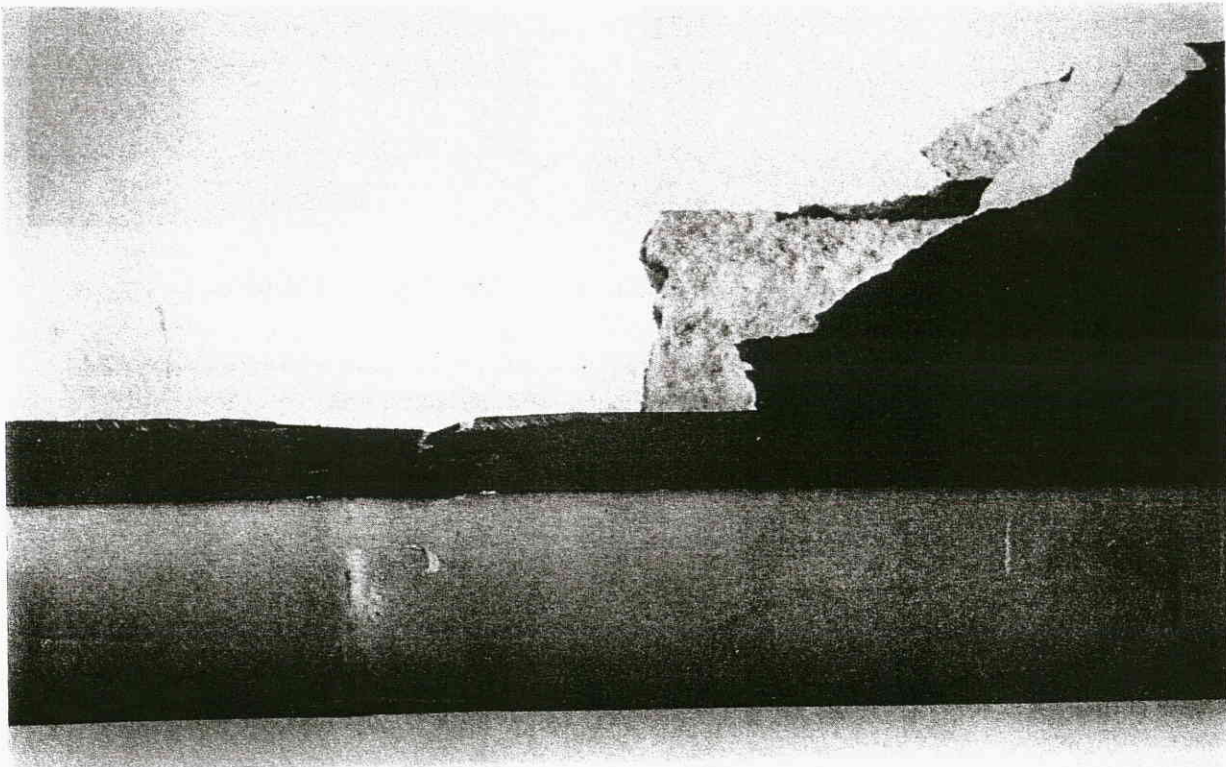
- Note 1: Two strikes on leading edge of 'white' blade and the single strike on the leading edge of 'black' blade.
- 2: Scale rule is 6 inches long.



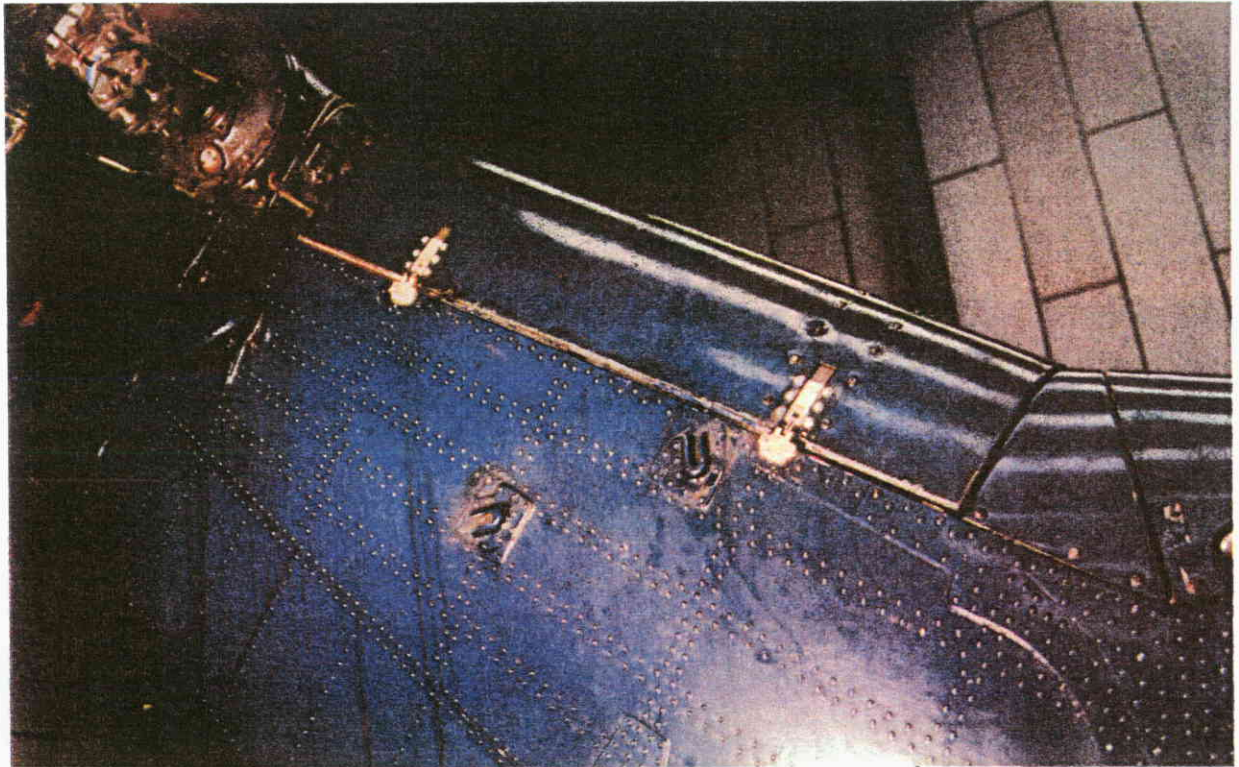
3 b) Close-up of strike marks on leading edge of 'white' blade.



3 c) Close-up of leading edge damage on 'black' blade.

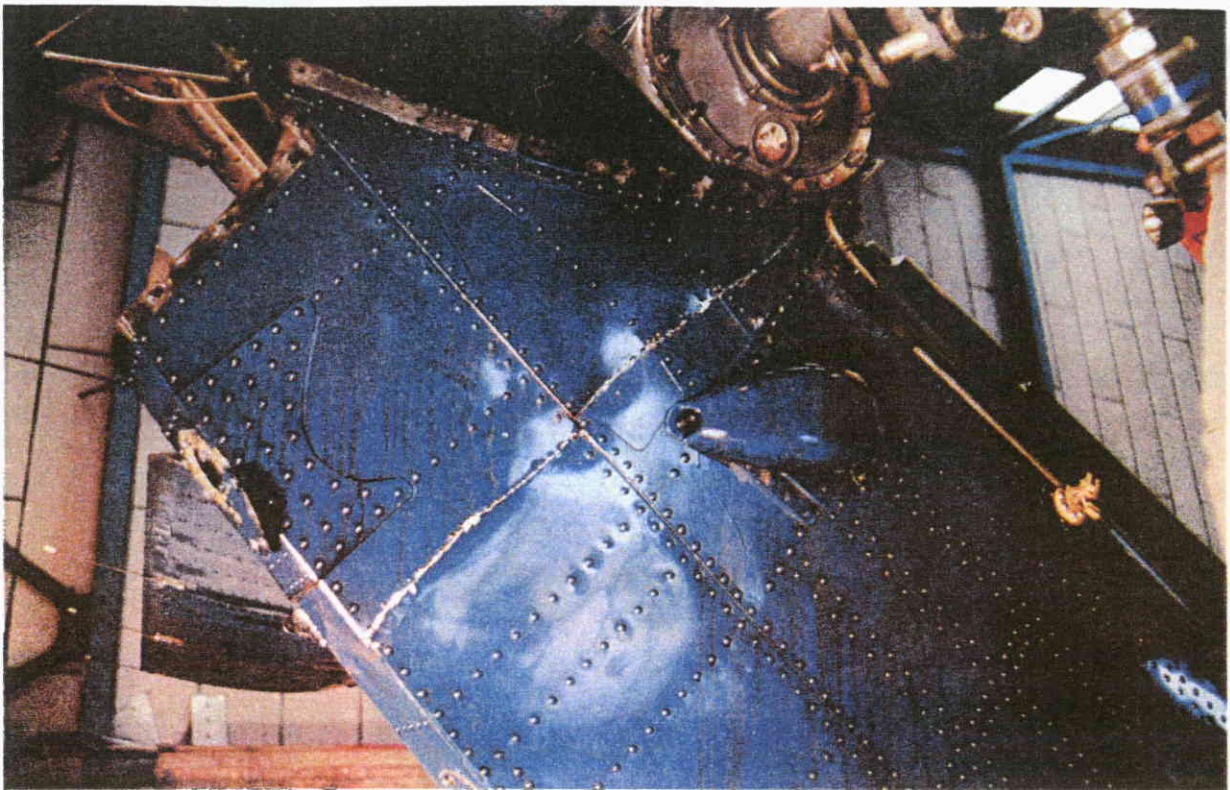


3 d) Close-up of leading edge damage on 'black' blade showing crushing of rear edge of blade spar.

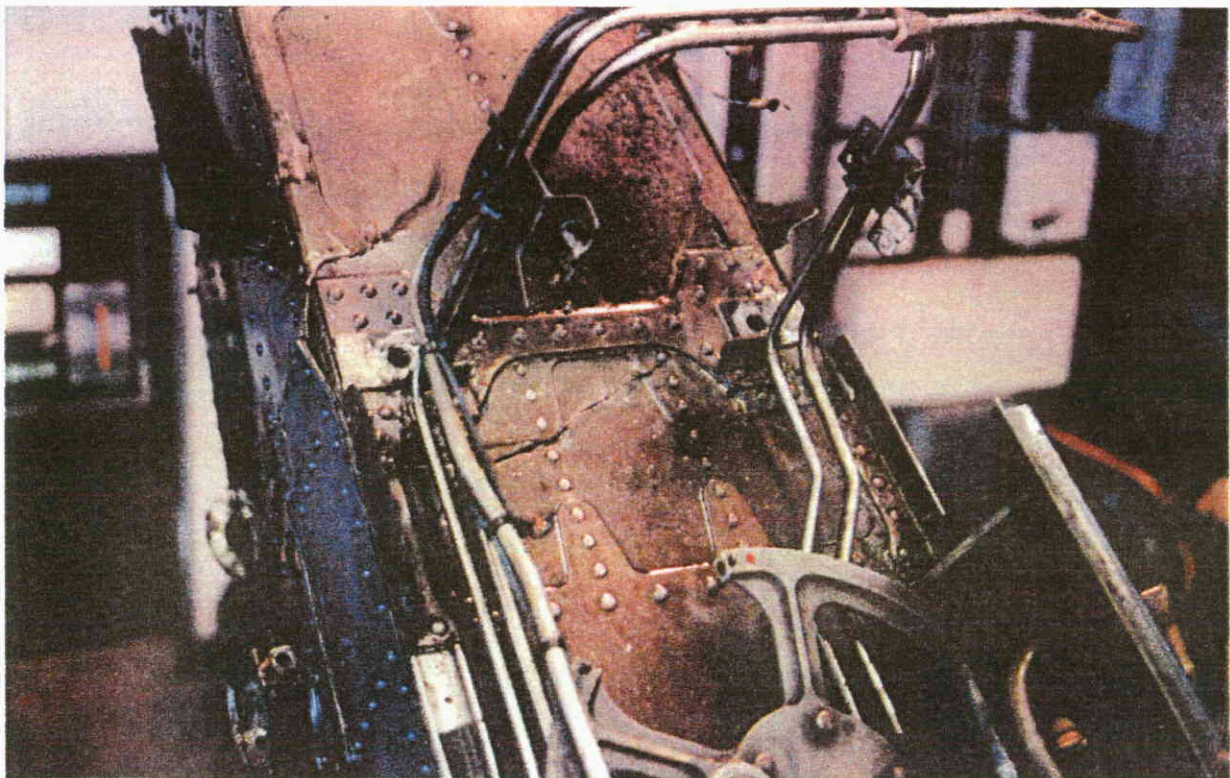


4 a) View of right side of pylon with inclined driveshaft fairing.

- Note 1: Gap between fairing edge and pylon inclined face at lower end of fairing from where segment of channel section had been lost.
- 2: Crack across side skin at gearbox mounting.



4 b) Upper right side of pylon showing crack across whole chord of side skin.



4 c) View of inclined face after removal of tail rotor gearbox

- Note 1: Cracks running in inclined face above and below gearbox attachment points.
2: Failure of rivets attaching side skin beside right hand lower mounting.

Abbreviations used in this report

ADI	Attitude Director Indicator
AFS	Airport Fire Service
ATC	Air Traffic Control
ATCO	Air Traffic Control Officer
BIH	British International Helicopters
CAA	Civil Aviation Authority
CG	Centre of Gravity
CVR	Cockpit Voice Recorder
daN	DecaNewtons
DDA	Design Deviation Authority
DGAC	Direction Generale de l'Aviation Civile
FDR	Flight Data Recorder
hr	Hour
ICAO	International Civil Aviation Organisation
IDS	Inclined Driveshaft
IGB	Intermediate Gearbox
IMC	Instrument Meteorological Conditions
kg	Kilograms
km	Kilometres
ksi	Thousands of Pounds per Square Inch
kt	Knot
MHz	Megahertz
m	Metres
m/s	Metres per Second
NDB	Non-directional Beacon
nm	Nautical Miles
PA	Public Address
PBX	Telephone Exchange
RTF	Radio Telephone
SAR	Search and Rescue
swg	Standard Wire Gauge
TRGB	Tail Rotor Gearbox